

The Hologram Control by Hands – AI Architect Platform

Bavana Mercy R, Manickavasagam J, Hidayathullah S, Hari Haran B, Mathana Mohan J

Assistant Professor, Department of Computer Science and Engineering, Mohamed Sathak Engineering College,
Kilakrai, India

Assistant Professor, Department of Computer Science and Engineering, Mohamed Sathak Engineering College,
Kilakrai, India

U.G. Student, Department of Computer Science and Engineering, Mohamed Sathak Engineering College, Kilakrai, India

U.G. Student, Department of Computer Science and Engineering, Mohamed Sathak Engineering College, Kilakrai, India

U.G. Student, Department of Computer Science and Engineering, Mohamed Sathak Engineering College, Kilakrai, India

ABSTRACT: This project presents the design and development of **The Hologram Control by Hands – AI Architect Platform**, an advanced AI-powered multimodal holographic architecture, automation, and spatial intelligence system aimed at transforming traditional gesture-controlled hologram interfaces into a production-ready Jarvis-style AI ecosystem. Conventional holographic and gesture systems often focus on predefined visual manipulation, limiting their applicability in architecture, automation, and intelligent system interaction. To address these challenges, the platform integrates **hand gesture recognition, voice interaction, Large Language Models (LLMs), 3D holographic visualization, architectural model deployment, construction analysis, AI automation, and modular MCP-style orchestration** into a unified intelligent framework.

The system enables users to naturally interact through **hand gestures, voice commands, and conversational AI** to control holographic environments, deploy and analyze 3D architectural models, measure structures, perform section slicing, automate browser/system tasks, and receive contextual AI guidance. The application is developed using **React.js for interactive UI, Three.js for holographic 3D rendering, MediaPipe for hand tracking, Web Speech APIs for voice interaction, Node.js/FastAPI for backend architecture, and GPT/Gemini for LLM intelligence**. It follows a layered architecture consisting of **Gesture Layer, Voice Layer, LLM Intelligence Layer, AI Architect Layer, Spatial Analysis Layer, Automation Layer, and Feedback Layer** to ensure modularity, maintainability, scalability, and production readiness. Key features include **drag-and-drop GLB/GLTF architectural deployment, AI-assisted construction visualization, point-to-point measurement, clipping-plane section slicing, intelligent HUD dashboards, natural language command interpretation, browser/system automation, YouTube and productivity control, MCP server architecture, and future BIM/AR/VR integration**. The final implementation results in a fully functional AI Architect Platform that demonstrates practical applications of software engineering,

KEYWORDS: The Hologram Control by Hands, AI Architect Platform, Gesture Recognition, MediaPipe, React.js, Three.js, Large Language Models (LLM), GPT, Gemini, Jarvis Interface, Spatial Intelligence, Construction Analysis, Building Plan Visualization, MCP Architecture, BIM Integration, Voice Automation, Human-Computer Interaction

I. INTRODUCTION

Traditional human-computer interaction systems primarily rely on keyboards, touch interfaces, and isolated software tools, which often lead to fragmented workflows and reduced natural interaction efficiency. Similarly, most holographic and gesture-based systems focus mainly on visual novelty or limited object manipulation, lacking architectural intelligence, contextual reasoning, automation, and real-world engineering applications. These limitations reduce their effectiveness in architecture, immersive engineering, smart automation, and AI-powered operating systems. With rapid advancements in **computer vision, large language models, multimodal AI, 3D visualization, and intelligent automation**, there is increasing demand for integrated systems that combine immersive interaction

with practical engineering functionality. Architectural workflows, in particular, benefit significantly from 3D model deployment, intelligent spatial analysis, and AI-driven automation. By utilizing technologies such as MediaPipe, LLMs, Three.js, and modular automation frameworks, holographic systems can evolve beyond visualization into intelligent architectural ecosystems.

To address these challenges, this project proposes ****The Hologram Control by Hands – AI Architect Platform****, which automates and enhances key operations such as holographic architectural control, building model deployment, AI-assisted construction analysis, measurement, section slicing, and system automation through a centralized multimodal platform. The system bridges the gap between traditional gesture interfaces and next-generation AI-powered architectural intelligence, creating a scalable solution for immersive architecture, automation, and future enterprise AI systems.

II. RELATED WORK

Several research efforts have focused on improving holographic visualization, gesture recognition, and intelligent automation through immersive technologies. Traditional holographic systems primarily emphasize visual engagement but often lack intelligent reasoning, architectural analysis, or automation capabilities. Gesture-based systems improve interaction but are commonly constrained to predefined command sets without contextual adaptability.

Modern AI systems, particularly ****Large Language Models (LLMs)**** such as GPT and Gemini, have introduced powerful conversational intelligence, contextual understanding, and natural language task execution. Similarly, architectural visualization systems provide advanced rendering capabilities but often lack intuitive multimodal control and AI-assisted reasoning. MCP and agentic architectures have also demonstrated modular tool orchestration but are rarely integrated with immersive holographic systems.

III. METHODOLOGY

1. System Architecture:

The platform follows a modular layered architecture to ensure scalability, maintainability, and extensibility.

2. Hand Gesture Control Layer:

MediaPipe-based hand tracking manages gesture detection, holographic navigation, and spatial interaction for controlling 3D architectural models.

3. Voice Interaction Layer:

Wake-word activation (“Jarvis”), conversational voice commands, and continuous voice automation enable natural communication and control.

4. LLM Intelligence Layer:

GPT/Gemini integration provides natural language understanding, contextual memory, AI Architect reasoning, and tool-calling capabilities for advanced interaction.

5. AI Architect Layer:

This layer handles building-plan deployment, construction visualization, measurement intelligence, section slicing, and future BIM/IFC analysis.

6. Automation Layer:

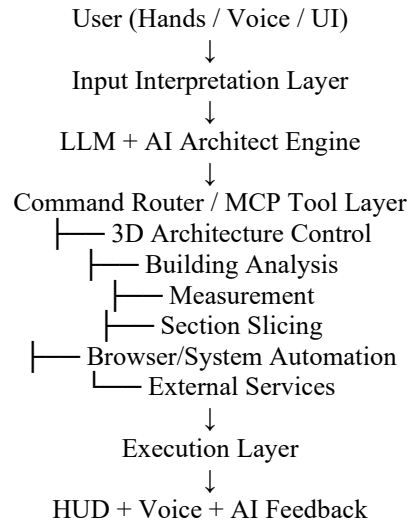
Browser automation, YouTube/search/productivity control, MCP servers, and future Electron/Desktop integration enable system-level automation.

7. Feedback & HUD Layer:

Real-time telemetry dashboards, AI assistant visualization, system logs, and voice responses provide interactive feedback.

2. Data Management and Execution Flow:

The system processes multimodal input through a unified execution framework:



3. Validation and Security Mechanism:

The system incorporates secure API routing, command validation, session management, telemetry logging, modular backend controls, and protected automation pathways to ensure secure and reliable operations.

IV. IMPLEMENTATION DETAILS

The AI Architect Platform is implemented using a modular architecture where frontend interaction, AI reasoning, backend execution, and automation systems are clearly separated to improve maintainability and performance.

A. Frontend Layer (React.js + Three.js):

Provides holographic UI, gesture HUD, architectural visualization, drag-and-drop model deployment, and spatial controls through modules such as App.jsx, Scene.jsx, HUD.jsx, useTelemetry.js, useMeasurement.js, and useClipping.js.

B. Gesture and Voice Layer:

MediaPipe handles hand gesture recognition, while Web Speech APIs and future Whisper integration manage conversational voice automation.

C. AI Layer (LLM Integration):

GPT/Gemini APIs provide conversational AI, prompt routing, architectural reasoning, and command decomposition for intelligent execution.

D. Backend Layer (Node.js / FastAPI):

Handles command APIs, authentication, AI routing, automation middleware, MCP tool architecture, telemetry logging, and future desktop integrations.

E. Spatial Intelligence Layer:

Three.js powers architectural model deployment, measurement tools, section slicing, and future BIM-ready systems.

V. EXPERIMENTAL RESULTS

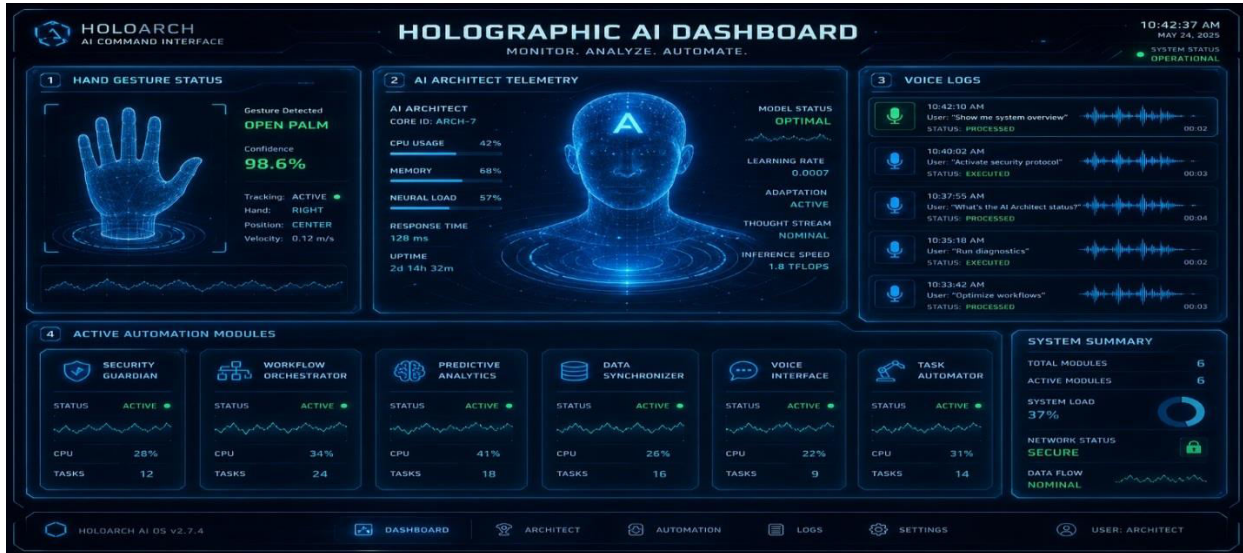


Fig 1

This screen displays the Holographic AI Dashboard, where users can monitor hand gesture status, AI architect telemetry, voice logs, and active automation modules in real time.



Fig 2

This screen shows the Architectural Model Deployment module, where users can drag and drop GLB/GLTF building plans, automatically normalize models, and interact holographically.

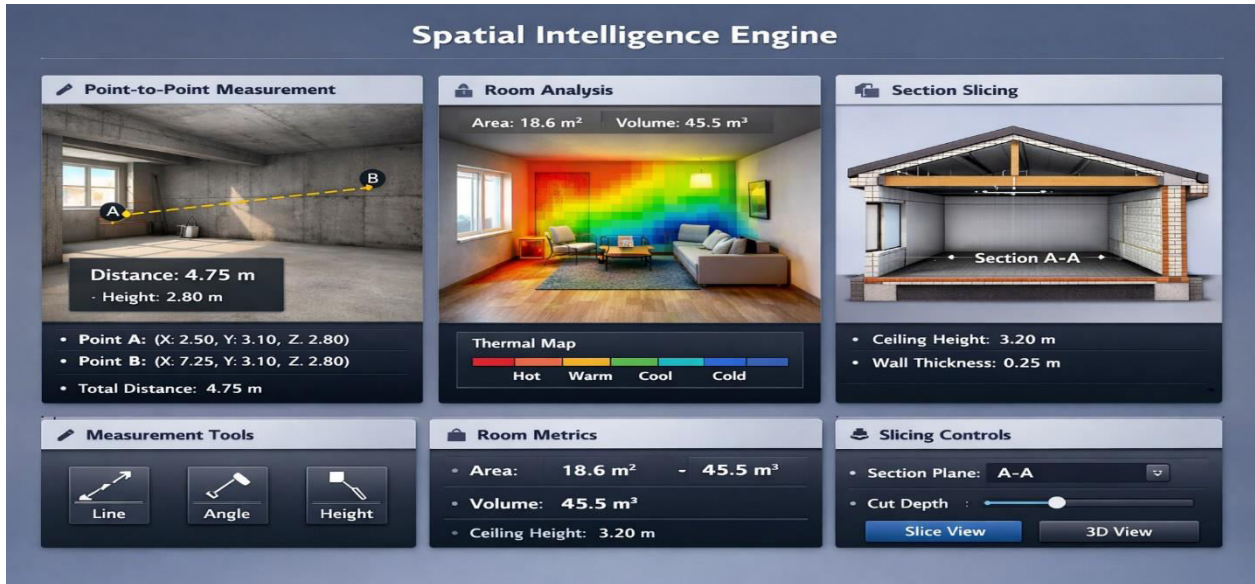


Fig 3

This screen represents the Spatial Intelligence Engine, where point-to-point measurement, room analysis, and structural section slicing are performed for construction and architectural evaluation.



Fig 4

This screen demonstrates the AI Automation & Architect Assistant, supporting commands such as:

- "Jarvis, open YouTube"
- "Analyze this building"
- "Measure wall length"

VI. CONCLUSION

****The Hologram Control by Hands – AI Architect Platform**** represents a transformative advancement in holographic systems by evolving beyond traditional gesture interfaces into a fully integrated ****AI-powered architectural intelligence and automation ecosystem****. By combining ****gesture recognition, voice automation, LLM intelligence, architectural visualization, construction analysis, and automation systems****, the platform successfully transforms holographic interaction into a practical AI Architect environment. The project demonstrates that integrating immersive technologies with AI reasoning and modular automation can create a scalable, production-ready platform for architecture, engineering, education, research, and enterprise innovation. Ultimately, this system serves as a bridge between holographic interaction, intelligent architecture, and next-generation multimodal AI operating systems.

REFERENCES

- [1] Research on 3D Holograms and Gesture Interaction
- [2] MediaPipe Hand Tracking Documentation
- [3] Three.js Documentation
- [4] OpenAI / Gemini API Documentation
- [5] Node.js / FastAPI Architecture
- [6] MCP / Agentic AI Systems
- [7] BIM, Architectural Visualization, and Spatial Intelligence Research



INTERNATIONAL
STANDARD
SERIAL
NUMBER
INDIA



INTERNATIONAL JOURNAL OF INNOVATIVE RESEARCH

IN SCIENCE | ENGINEERING | TECHNOLOGY

 9940 572 462  6381 907 438  ijirset@gmail.com



www.ijirset.com

Scan to save the contact details